

ZEPF | *dental*
innovations

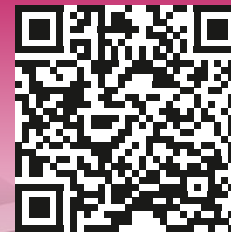


Manufacturer since **1921**

MADE  IN GERMANY



IDSconnect >
join us!



IDS, Cologne 2003

The team of Helmut Zepf Medizintechnik GmbH
congratulates on 100 years of IDS!



True craftsmanship The Helmut Zepf Medizintechnik GmbH success began in 1921 with one of the most influential surgeons of the 20th century, Prof. Ernst Ferdinand Sauerbruch. The pioneer of thoracic surgery is known worldwide for his groundbreaking surgical methods. Simple surgical instruments do not meet his high expectations. In his quest for high-quality instruments, he turned to Isidor Zepf, a small instrument producer in the town of Seitingen-Oberflacht, in the Swabia region of southern Germany. The professor has very specific ideas, and Isidor Zepf promises him a solution for a surgical instrument set for an arm or leg prosthesis. To Sauerbruch's delight, he solves this tricky task with flying colors. The foundation stone is laid for success in the years to come, and history takes its course.

100 years and four generations More than 100 years and four generations later, Helmut Zepf Medizintechnik GmbH stays true to this promise. According to its mission statement "Aesthetic is the result", the company develops innovative solutions in close cooperation with renowned physicians and health professionals. Many years of experience and sound knowledge of the field of application are incorporated in the developments. The focus is on functionality, ergonomics and safety, all packaged in an attractive design. A one-man business has grown into a leading manufacturer of medical and surgical instruments. Over the years, the product portfolio has matured in the areas of diagnostics, periodontology, conservation, extraction, dental surgery, implantology, microsurgery and dental technology. Then there are the Zepfcare product families, with useful accessories, as well as CMF (Cranio Maxillofacial Fracture) systems. The company now offers a wide range of products and supplies implantologists and orthodontists in over 70 countries. Craftsmanship "Made in Germany".

Tuttlingen Besides the strong family ties, the Tuttlingen location, as a world center for medical technology, also contributes to the company's affinity towards its origins in Seitingen-Oberflacht. New production buildings, state-of-the-art manufacturing facilities and IT technologies have been created in recent years. Over 100 employees work on the company site today. Numerous products leave the 3,500 sqm production facility daily, making their way all over the world via the internal logistics center. With its high density of qualified specialists, Helmut Zepf Medizintechnik GmbH has always managed to assert itself as a trendsetter in the field of dental hand instruments. The team is supported by expert quality management, ensuring product safety in terms of medical standards and the highest hygiene regulations.

A family The employees play an important role in the history of Helmut Zepf Medizintechnik GmbH. As a family company, we are aware of the responsibility this entails. Modern jobs in the workplace, flat hierarchies and special benefits continue to contribute to the informal working atmosphere, while exciting training opportunities enhance attractiveness for young talent. The company demonstrates its close ties with the region and its people through its social commitment in local organizations, among other things.

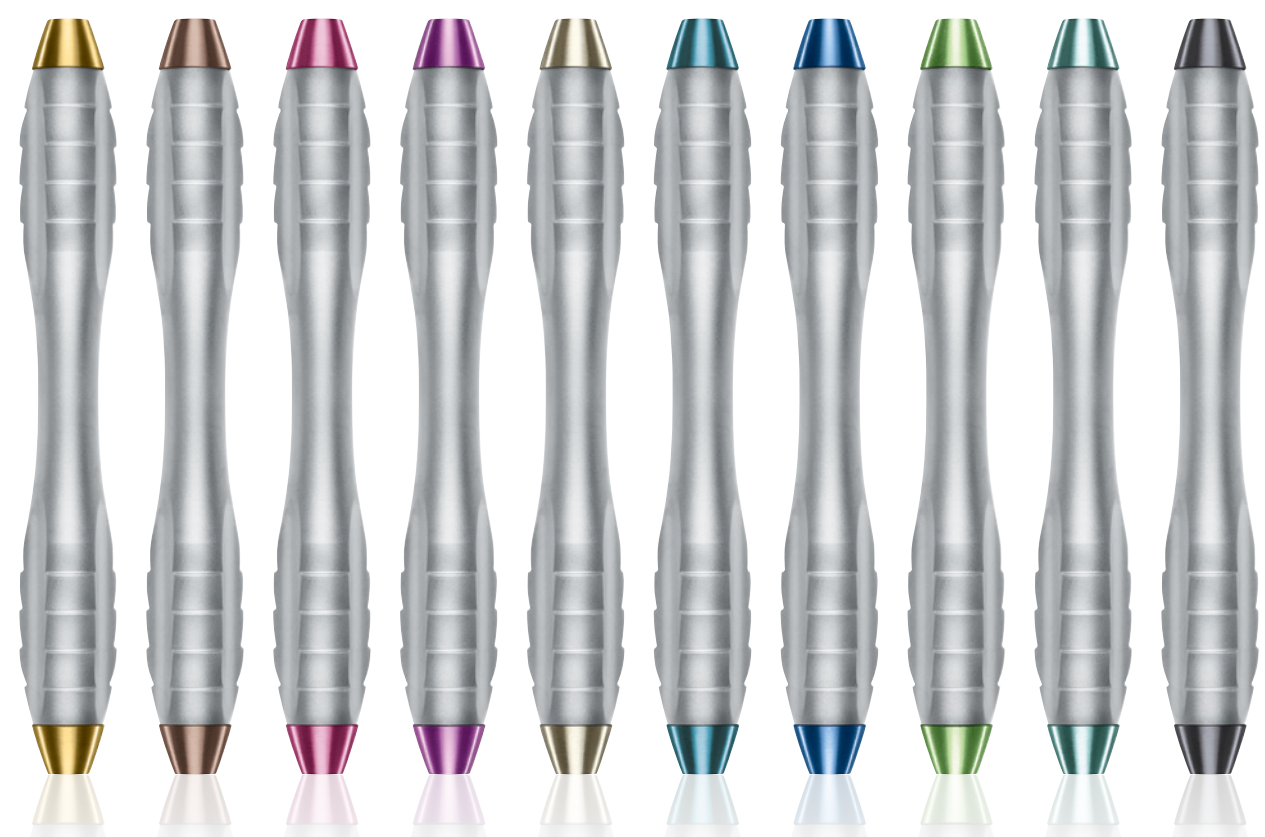
Helmut Zepf Medizintechnik GmbH today Following in the footsteps of his predecessors Isidor Zepf, Helmut Zepf Senior and Helmut Zepf Junior, Patrick Zepf took over the reins of the family company in 2018. True to the motto of the company founder: "high quality criteria and openness for innovation", Patrick Zepf also successfully follows this mission. The family looks back over the past 100 years with pride. Over generations, it has managed to withstand crises, to recognize the trends of the times and to encounter them with an open mind.



Z-SHAPE RELAX DBGM

The „New Generation Handles“ **NEW!**

The Z-SHAPE Relax handles were designed according to ergonomic knowledge for the optimal working process during the curettage. With a total length of 100 mm, the handle fits perfectly in the hand. As usual, the instrument tips are interchangeable due to the M4x0.5 mm thread. **QUICKFIX**



Handle colors **HELMUT ZEPF**
Z-SHAPE Relax handles,
double-ended, M4x0.5:

-  **26.030.01** yellow
-  **26.030.02** brown
-  **26.030.03** violet
-  **26.030.04** signal purple
-  **26.030.05** champagne
-  **26.030.06** turquoise
-  **26.030.07** cobalt-blue
-  **26.030.08** yellow-green
-  **26.030.09** mint
-  **26.030.10** black



Single-ended Z-SHAPE Relax handles with nanopal® coating **NEW!**


Available with M4x0.5 and M2.5 threads as required, our handy single-enders also feature the scratch-resistant **ZEPF nanopal®** coating. The black, impact-resistant surface is easy to clean and prevents unpleasant light reflections. **QUICKFIX**



HELMUT ZEPF
Z-SHAPE Relax handle,
single-ended, M4x0.5:

-  **26.010.110X** yellow

HELMUT ZEPF
Z-SHAPE Relax handle,
single-ended, M2.5:

-  **26.010.210X** yellow

Infinite possibilities:

M4x0.5 or M2.5 mm
thread



Z-SHAPE RELAX DBGM



12.300.08

Benex II Extractor
incl. Support Disc


12.300.80

 Quadrant Support
to bridgeover bigger gaps
and for universal molding

Benex II

The individual components
acc. to Dr. med., med. dent. Benno Syfrig

12.302.00 **Benex II** Extraction System12.303.00 **Benex II** Basic Kit

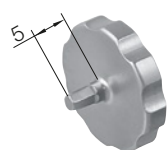
Apart from the Washbasket 1/1 with Lid and Press Button Lock (85.195.10) incl. the Benex II Tray / Rack (12.302.01) for the Extraction System and the Washbasket 1/2 with Lid and Press Button Lock (85.194.10) for the Basic Kit, the following components are included in both Sets (pict. scale 1:1):

 FURTHER QUESTIONS?
www.benex-dent.com


12.300.15

 Replacement Support
Disc, 8 mm (PTFE)


12.300.20

 Pullrope, 48 mm,
PU: 2 pieces


12.300.47

Driver Guide, short



12.300.60

 1 Screw 10 mm
Ø 1.6 mm, S = Short


12.300.65

 1 Screw 10 mm
Ø 2.1 mm, SF = Short & Fat


12.300.30

 1 Diamond coated Drill
for Screws Ø 1.6 mm
12.300.60 and 12.300.70


12.300.70

 1 Screw 16 mm
Ø 1.6 mm, L = Long


12.300.75

 1 Screw 16 mm
Ø 2.1 mm, LF = Long & Fat


12.300.35

 1 Diamond coated Drill
for Screws Ø 2.1 mm
12.300.65 and 12.300.75

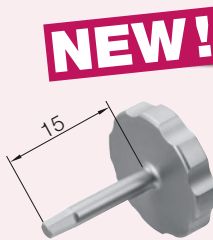
OPTIONALLY AVAILABLE



12.300.17

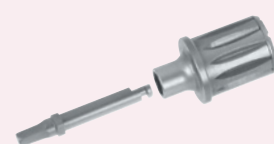
 Support Disc,
diagonally left


12.300.16

 Support Disc,
diagonally right


12.300.48

Driver Guide, long



12.300.45

Blade for

47.525.51

Driver Guide FD

Xtool Instruments

with serration acc. to Lindo-Levien

NEW!

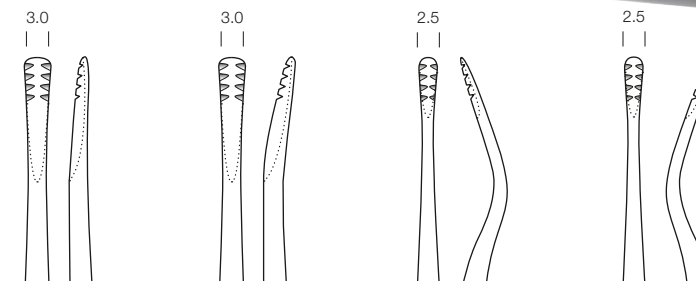
In modern dentistry, implantology with immediate insertion after tooth removal is increasingly becoming the focus of attention. In order to follow the principle of minimal invasiveness, it is imperative to preserve the surrounding hard and soft tissue as much as possible during extraction.

For this purpose, we have supplemented our Xtool range by 4 modified instruments that have an additional Lindo-Levien serration.

The fine Lindo-Levien serration enables the Xtool instrument to be fixed to the tooth root in a non-slip manner, thus facilitating extraction of the tooth by means of a counteracting force without leverage.



For cleaning the alveolus after extraction we recommend our Lucas curettes. The serrated Lucas curettes support a safe treatment in the field of cyst removal.



X-Luxa-Tool 6 Elevator, acc. to Lindo-Levien, straight, 3.0 mm, green metallic

straight

17.007.06LL



X-Luxa-Tool 7 Elevator, acc. to Lindo-Levien, curved, 3.0 mm, blue metallic

curved

17.007.07LL


 X-Approximal Root Elevator, acc. to Lindo-Levien, curved, 2.5 mm, # 77S,
distal elevator, purple metallic

curved

17.008.01LL


 X-Approximal Root Elevator, acc. to Lindo-Levien, curved, 2.5 mm, # 77RS,
mesial elevator, purple metallic

curved

17.008.02LL

THE ORIGINAL

Benex® SinusLift Elevators

acc. to Dr. med., med. dent. Benno Syfrig

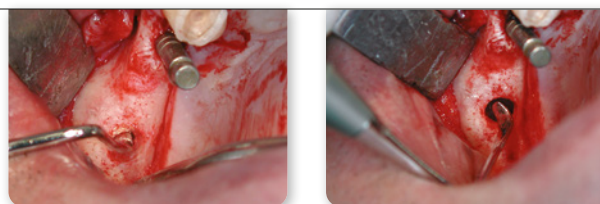
For internal sinus lift with osteotome technique (Summers technique), generally a height of at least 6 mm of remaining bone is required. If this height is lower, a sinus floor elevation by lateral window approach is recommended (external sinus lift).

In co-operation with the company **HELMUT ZEPF** Medizintechnik GmbH, Dr. med., med. dent. Benno Syfrig (CH) has developed an instrumentation allowing an easy, safe and practical elevation of the Schneider membrane through the implant tunnel to any height, independent of the offer of vertical bone.

The intervention is extremely gentle to the tissue. The buccal maxillary sinus wall and eventual sinus bone septums remain intact. This is to guarantee a good ossification of the augmentation material and an accelerated osseointegration of the implant.

Benno Syfrig

Intra-operative: Release and elevation of the Schneider membrane with the sinus elevators # 1 and # 2



41.848.41 Benex® SinusLift Elevator, # 1, ZEPF-Line handle, with graduation

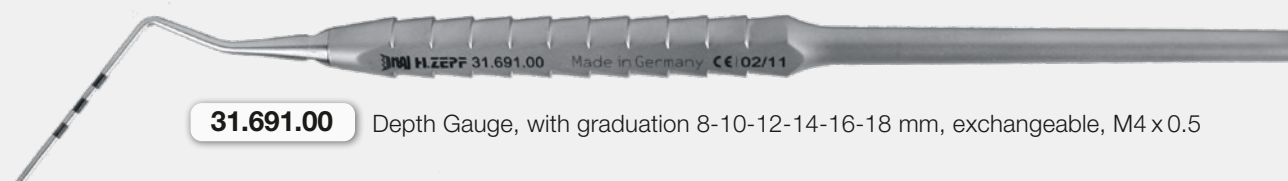


41.848.42 Benex® SinusLift Elevator, # 2, ZEPF-Line handle, with graduation

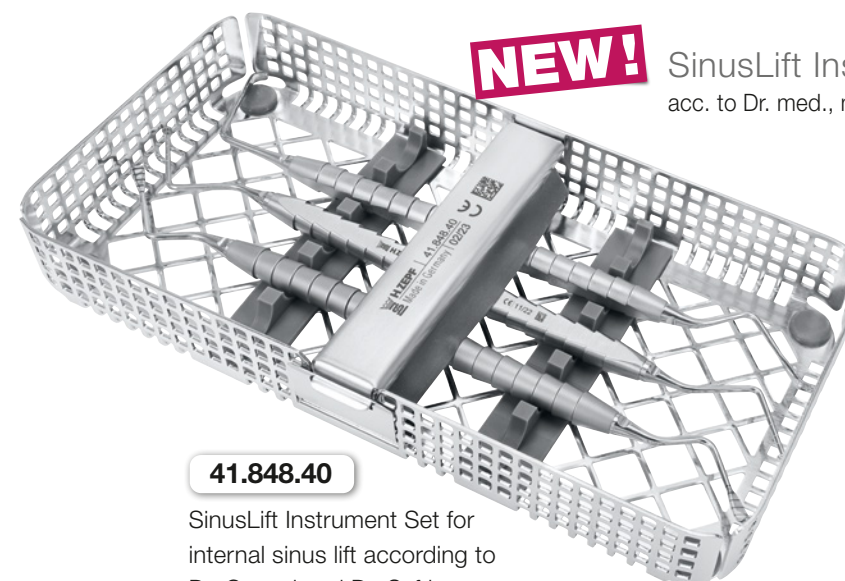
Supplementary Instruments



41.868.07 Kirsch Sinus 7 Plugger, double-ended, 17.5 cm, Spoon 8 x 10 mm, Titanium ZEPF-Line

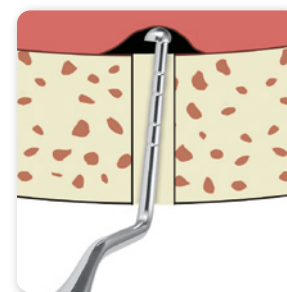


31.691.00 Depth Gauge, with graduation 8-10-12-14-16-18 mm, exchangeable, M4 x 0.5



41.848.40

SinusLift Instrument Set for internal sinus lift according to Dr. Cacaci and Dr. Syfrig



41.848.43 Cacaci SinusLift Elevator, ZEPF-Line handle, with graduation

NEW!

SinusLift Instrument Set

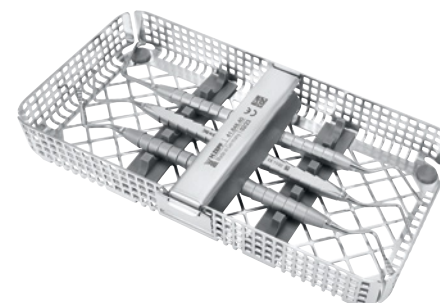
acc. to Dr. med., med. dent. Benno Syfrig and Dr. med. dent. Claudio Cacaci

This set combines the important instruments for an atraumatic sinus lift. It consists of the two **Benex®** SinusLift elevators (REF 41.848.41/.42) and the newly developed sinus elevator according to Dr. Cacaci (REF 41.848.43). With this elevator, the sinus floor mucosa is stretched, with rotating and pushing movements, and thus lifted from the sinus floor bone and to ensure that the membrane has been detached.

Advantages at a glance:

- atraumatic
- no infection risk in comparison to a open OP
- no wound care or healing interruption
- extremely shortened treatment period
- high success rate. Secure in use
- shortened osseointegration

Illustration



Article Description

41.848.40

SinusLift Instrument Set for internal sinus lift according to Dr. Cacaci and Dr. Syfrig in a washtray
REF 85.182.00. All instruments are double-ended with interchangeable inserts and ZEPF-Line handle, with graduation, M4x0.5

Order Quantity

1 set



41.848.41

Benex® SinusLift Elevator, # 1

1 piece



41.848.42

Benex® SinusLift Elevator, # 2

1 piece



41.848.43

SinusLift Elevator acc. to Dr. Cacaci

1 piece

Surgical Aspiration Tube, serrated

"Thanks to my new surgical aspiration tube, my surgical knots now fit even tighter and better!"


NEW!

19.649.40 Surgical Aspiration Tube, Ø 3 mm, 175 mm long, slotted with serration

Syringes stainless, 1.8 ccm

NEW!

19.700.01

Cartridge Syringe,
metric thread, 1.8 ccm,
self-aspiration,
crutch handle

self-aspiration

19.700.01US

US thread

19.700.02

Cartridge Syringe,
metric thread, 1.8 ccm,
rhombus aspiration,
thumb ring handle

rhombus aspiration

19.700.02US

US thread

19.700.03

Cartridge Syringe,
metric thread, 1.8 ccm,
harpoon aspiration,
thumb ring handle

harpoon aspiration

19.700.03US

US thread

19.700.04

Cartridge Syringe,
metric thread, 1.8 ccm,
corkscrew tip aspiration,
thumb ring handle

corkscrew tip asp.

19.700.04US

US thread



Micro Needle Holder **SpinLock**

ZEPF-Line with SpinLock technology, lock and protected inner double spring, TC, made out of stainless steel.



41.200.17TC
4/0 - 8/0

41.201.17TC
4/0 - 8/0

Micro Needle Holder TC

41.200.15TC 16 cm

41.200.17TC 17.5 cm

41.201.15TC 16 cm

41.201.17TC 17.5 cm

Universal Handle for the Prosthetic Kit



47.502.15

Universal Handle for the Prosthetic Kit,
16 cm

Kahn Probe

Kahn Probe for measuring a free gingival graft,
40 mm with 2 mm graduation.



24.454.00

Complete Instrument in
Z-SHAPE Relax handle
single ended, with ex-
changeable insert, M4x0,5

Z-SHAPE
RELAX DBGM

24.455.00

Kahn Probe Insert,
M4x0,5

Tunneling Instrument Combination acc. to Istvan Urban

Tunneling instrument and raspatory sensibly combined
in one instrument. With angulated and exchangeable
inserts.



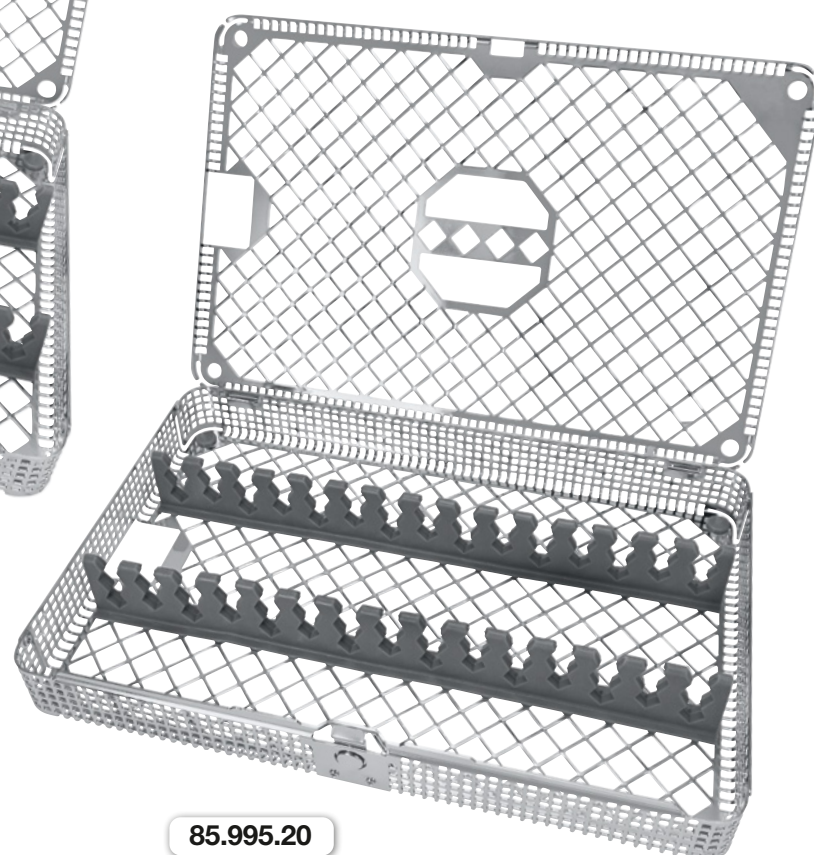
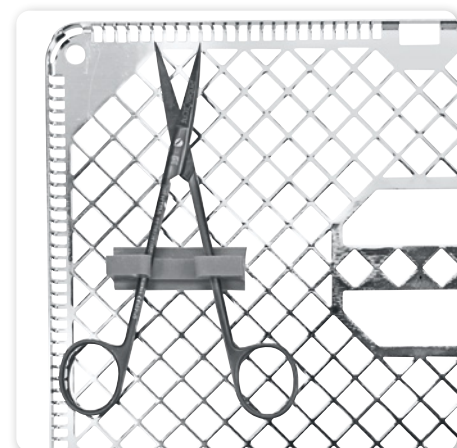
46.035.30

Tunneling Instrument Combination, angulated,
Micro Periosteal Elevator, in **ZEPF bionik**
handle, grey, exchangeable inserts, M4x0.5

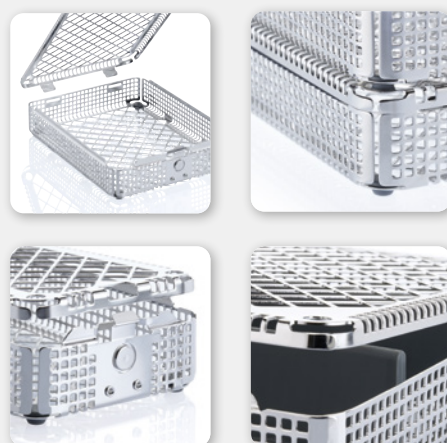
bionik
reddot design award
winner 2010

ZEPF care
system

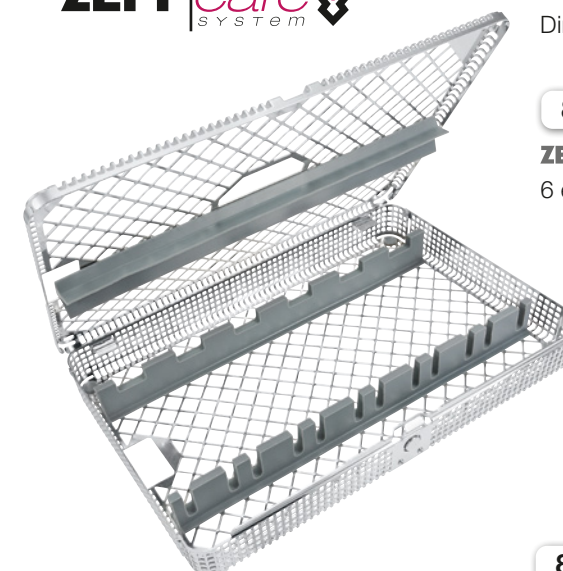
 Pre-assembled **ZEPF** Washbaskets
Dimensions in closed state 275 x 178 x 37 mm

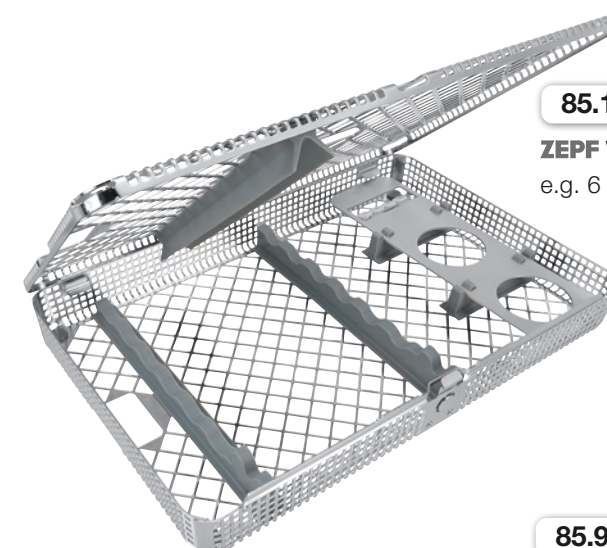
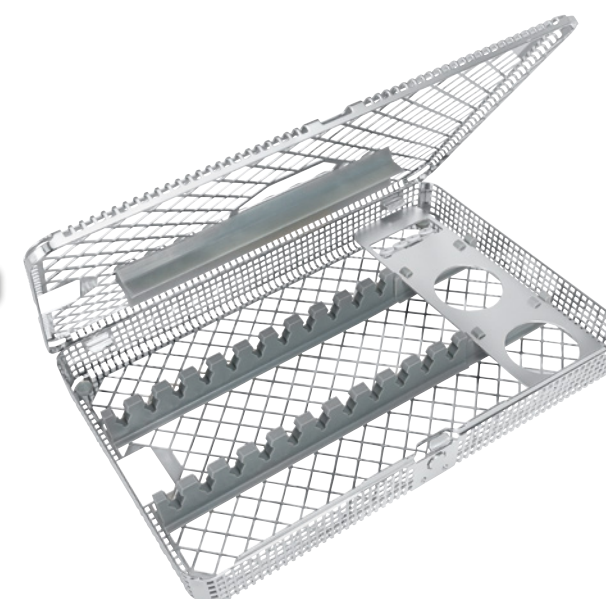
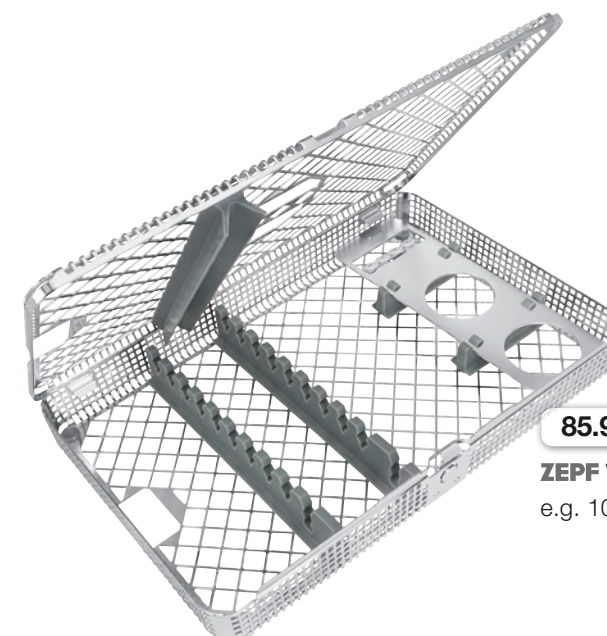
NEW!
85.995.25
ZEPF Washbasket 1/1 with universal silicone profiles for 10 instruments lengthwise and 5 instruments crosswise plus one pair of scissors in the lid

85.995.20
ZEPF Washbasket 1/1 with universal silicone profile for 15 instruments lengthwise

Advantages

- The meshes of the bottom and the lid are designed in a broad shape. Consequently dead zones are minimized.
- The diagonal profile of the mesh simplifies the identification of the parallel arranged instruments in the profile.
- The meshes on the edge of the tray are designed in a narrow shape and thus enhance the stability of the basket.
- The risk of injury is reduced.


ZEPF care
system

 Pre-assembled **ZEPF** Washbaskets
Dimensions in closed state 275 x 178 x 37 mm

NEW!
85.195.03
ZEPF Washbasket 1/1 with universal silicone profile for 6 extraction forceps (XLOG, XCISION...)

85.195.20
ZEPF Washbasket 1/1 with universal silicone profile for e.g. micro needle holder, micro forceps, micro scissors, papilla elevator, scalpel handle and 8 additional hand instruments

85.195.60
ZEPF Washbasket 1/1 with universal silicone profile for e.g. 6 chisels, 4 drills, 2 mixing cups and a hand instrument

85.995.00
ZEPF Washbasket 1/1 with universal silicone profile for e.g. 11 hand instruments, 2 mixing cups and 4 drills

85.995.01
ZEPF Washbasket 1/1 with universal silicone profile for e.g. 10 hand instruments, 2 mixing cups and 4 drills


ZEPF Umbrella Screws for the CMF[®] SYSTEM
NEW!

Successful defect regeneration requires space and calm. Our umbrella screws create space and a stable area for the inserted augmentation material. The covering soft tissue is kept away and prevents the augmentation from "shifting/compressing" when particulate augmentation material is used.

The steel screws are available in different lengths with Ø 1.2 mm. The corresponding screwdriver blades are **REF** 47.524.12 or **REF** 47.523.12.

Illustration	UMBRELLA Steel Screws Ø 1.2 mm / PU: 1 piece
	47.572.50* Ø 1.2 x 8 mm, head Ø 4 mm
	47.572.51* Ø 1.2 x 10 mm, head Ø 4 mm
	47.572.52* Ø 1.2 x 12 mm, head Ø 4 mm
	47.572.53* Ø 1.2 x 8 mm, head Ø 6 mm
	47.572.54* Ø 1.2 x 10 mm, head Ø 6 mm
	47.572.55* Ø 1.2 x 12 mm, head Ø 6 mm

CMF[®] SYSTEM
 CRANIO MAXILLOFACIAL FRACTURE SYSTEM


For detailed information just **scan!** or request our product flyer on the internet at **www.zeph-dental.com**.

47.504.10
CMF[®] Box "big"

for Screw Systems



▶ Ø 1.0 mm STEEL



▶ Ø 1.2 mm CMS Titanium



▶ Ø 1.5 mm MICRO Titanium



▶ Ø 1.2 mm UMBRELLA STEEL



▶ Ø 1.4/1.9 mm EMERGENCY Titanium

ZEPF
 Screwdriver Handle,
 with blade

ZEPF CMF[®] SYSTEM
 CRANIO MAXILLOFACIAL FRACTURE SYSTEM

The aim of an osteosynthesis is the rapid and complete regeneration of the damaged bone function.

The **ZEPF CMF[®]** System is providing optimal and uncomplicated set solutions for every customer preference.

The steel screws of a diameter of 1.0 mm and the titanium screws of diameters of 1.2 mm and 1.5 mm can be configured individually.

There is no limit to equip the system for different indications.

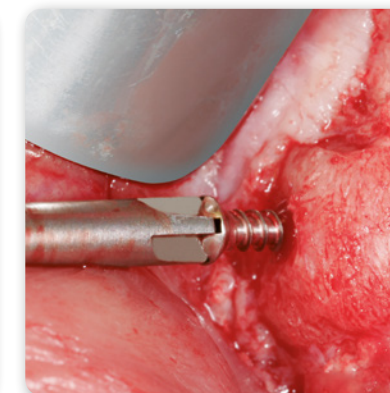
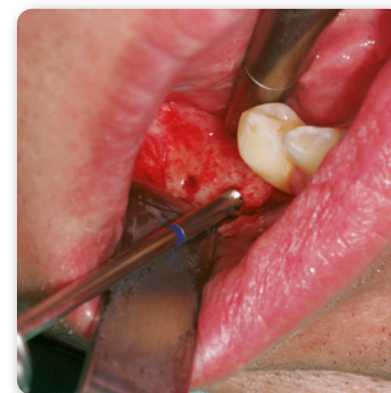
As the customer can just select the articles he really needs, an overloading of the system will be avoided.

Features of the CMF[®]-System

- Coated universal toolbox, fixable, for individual equipping
- The racks for carrying the screws can also be marked with exchangeable screw indicators for clear identification of the screws
- Pin carrier in the screw box to extend the system practically with a pin set for fixing membranes
- Space for carrying meshes and mini plates

The tight secure fit of the screws on the screwdriver with self-retaining function enables a safe take-up and positioning.

The self-cutting Phillips screws offer a superior stability and optimal inserting in osseous structures.


Universal Toolbox for the ZEPF CMF[®] SYSTEM

The universal tool box is used for storing the tools for the **CMF[®]** Set. The tool box offers enough space for the following items:











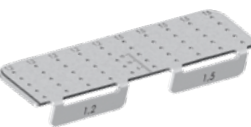


- Screwdriver handle, big and small, each with dental connection, in the new optimized **ZEPF**-Design. They have a socket for exchangeable blades of all different diameters. The use of the handles is easy and intuitive while changing the blades.
- The blade holder allows an extra secure fixing of the screw heads on the blade insert.
- The inserting assistant is used for areas with tight space conditions.
- The Pin Applicator **REF** 47.950.02 which fits in the screwdriver handles completes the set for fastening foils and membranes.


47.501.03

CMF[®] Box for Screw Systems
 Ø 1.0 mm, Ø 1.2 mm and Ø 1.5 mm
 with optional Screw Rack.
 The different screw rack configurations can be found on the following page.



ZEPF CMF SYSTEM
CRANIO MAXILLOFACIAL FRACTURE SYSTEM

The content can be composed using the following table:

Illustration	for Ø 1.0 mm STEEL Steel Screws	for Ø 1.2 mm CMS Titanium Screws	for Ø 1.5 mm MICRO Titanium Screws
	47.502.02 Screwdriver Handle, small	47.502.02 Screwdriver Handle, small	47.502.02 Screwdriver Handle, small
 Blade Φ, short, with color coding	47.523.12* Blade Ø 1.2 mm, 15 mm, □	47.523.12* Blade Ø 1.2 mm, 15 mm, □	47.523.15* Blade Ø 1.5 mm, 15 mm, ■
 Blade Φ, long, with color coding	47.524.12* Blade Ø 1.2 mm, 60 mm, □	47.524.12* Blade Ø 1.2 mm, 60 mm, □	47.524.15* Blade Ø 1.5 mm, 60 mm, ■
	47.525.12* Inserting Assistant Ø 1.2 mm	47.525.12* Inserting Assistant Ø 1.2 mm	47.525.15* Inserting Assistant Ø 1.2 mm
 Core Hole Drill (DD = Drilling Depth)	08.523.08* Drill Ø 0.8 mm, DD 7 mm	08.523.09* Drill Ø 0.9 mm, DD 9 mm	08.523.13* Drill ■ ■ Ø 1.3 mm, DD 12 mm
 Gliding Hole Drill (DD = Drilling Depth)	08.523.11* Drill Ø 1.1 mm, DD 9 mm	08.523.13* Drill ■ ■ Ø 1.3 mm, DD 12 mm	08.524.16* Drill ■ ■ Ø 1.6 mm, DD 12 mm
 Gliding Hole Drill "Emergency" (DD = Drilling Depth)		08.524.16* Drill ■ ■ Ø 1.6 mm, DD 12 mm	08.524.19* Drill ■ ■ Ø 2.0 mm, DD 12 mm
	47.950.02* Pin Applicator 60 mm	47.950.02* Pin Applicator 60 mm	47.950.02* Pin Applicator 60 mm
	08.902.031HF* HM-drill, round, Ø 3.0 mm	08.902.031HF* HM-drill, round, Ø 3.0 mm	08.902.031HF* HM-drill, round, Ø 3.0 mm
	08.906.029C* Diamond, round, Ø 2.9 mm	08.906.029C* Diamond, round, Ø 2.9 mm	08.906.029C* Diamond, round, Ø 2.9 mm
	85.540.60 Screw Rack Ø 1.0 / 1.2 mm each 4 rows + 2 rows Ø 1.5 mm to accommodate 5 screws	85.540.51 Screw Rack Ø 1.2 mm each 10 rows to accommodate 5 screws	85.540.54 Screw Rack Ø 1.5 mm each 10 rows to accommodate 5 screw
	85.540.52 Screw Rack Ø 1.2 mm 5 rows and Ø 1.5 mm 5 rows to accommodate 5 screws	85.540.55 Screw Rack Ø 1.5 mm 5 rows and Ø 2.0 mm 5 rows to accommodate 5 screws	
	47.560.03* Titanium Pin, 3 mm (5 pieces)	47.560.03* Titanium Pin, 3 mm (5 pieces)	47.560.03* Titanium Pin, 3 mm (5 pieces)
	47.560.05* Titanium Pin, 5 mm (5 pieces)	47.560.05* Titanium Pin, 5 mm (5 pieces)	47.560.05* Titanium Pin, 5 mm (5 pieces)

ZEPF CMF SYSTEM
CRANIO MAXILLOFACIAL FRACTURE SYSTEM

The CMF Screw Program:







Illustration	Ø 1.0 mm STEEL Steel Screws	Ø 1.2 mm CMS Titanium Screws	Ø 1.5 mm MICRO Titanium Screws
 Color Pins are included in each packing unit of screws. An easy identification of the screws is guaranteed by using the length markers in the tray. The colored pin with length marking is assigned to the respective screw diameter, thus allowing the determination of the screw length and a clear lot traceability in the tray. 1.0 mm = "green" 1.2 mm = "silver" 1.5 mm = "blue"	Steel Screws PU: 5 pieces 47.573.04S* Ø 1.0 x 4 mm 47.573.06S* Ø 1.0 x 6 mm 47.573.08S* Ø 1.0 x 8 mm 47.573.10S* Ø 1.0 x 10 mm	Titanium Screws PU: 5 pieces 47.574.04* Ø 1.2 x 4 mm 47.574.06* Ø 1.2 x 6 mm 47.574.08* Ø 1.2 x 8 mm 47.574.10* Ø 1.2 x 10 mm 47.574.12* Ø 1.2 x 12 mm	Titanium Screws PU: 5 pieces 47.575.04* Ø 1.5 x 4 mm 47.575.06* Ø 1.5 x 6 mm 47.575.08* Ø 1.5 x 8 mm 47.575.10* Ø 1.5 x 10 mm
 Emergency = "red"		Emergency Screws PU: 3 pieces 47.574.35* Ø 1.4 x 5 mm 47.574.40* Ø 1.4 x 10 mm	Emergency Screws PU: 3 pieces 47.575.36* Ø 1.9 x 6 mm 47.575.39* Ø 1.9 x 9 mm 47.575.43* Ø 1.9 x 13 mm

ZEPF Umbrella Screws for the CMF SYSTEM



Successful defect regeneration requires space and calm. Our umbrella screws create space and a stable area for the inserted augmentation material. The covering soft tissue is kept away and prevents the augmentation from "shifting/ compressing" when particulate augmentation material is used.


The steel screws are available in different lengths with Ø 1.2 mm. The corresponding screwdriver blades are **REF** 47.524.12 or **REF** 47.523.12.

Illustration	UMBRELLA Steel Screws Ø 1.2 mm / PU: 1 piece
	47.572.50* Ø 1.2 x 8 mm, head Ø 4 mm
	47.572.51* Ø 1.2 x 10 mm, head Ø 4 mm
	47.572.52* Ø 1.2 x 12 mm, head Ø 4 mm
	47.572.53* Ø 1.2 x 8 mm, head Ø 6 mm
	47.572.54* Ø 1.2 x 10 mm, head Ø 6 mm
	47.572.55* Ø 1.2 x 12 mm, head Ø 6 mm

CMF[®] SYSTEM

CRANIO MAXILLOFACIAL FRACTURE SYSTEM

Sets, big or compact

-  1.0 mm Steel Screws
-  1.2 mm Titanium Screws
-  1.5 mm Titanium Screws

You can choose between 2 sets each (big or compact) for all the 3 screw diameters.

Basic configuration consisting of:

Box (big / compact), screwdriver + blade, core hole drill, pin applicator and one pack of screws and pins in the length of your choice are included in the set!

CMF[®] Set “compact”

Advantages

- Space-saving design
- With silicone profile for fixation in a ZEPF washbasket system

SPECIAL OFFER

CMF[®] Set “big”

Advantages

- All in one place
- Space for other accessories

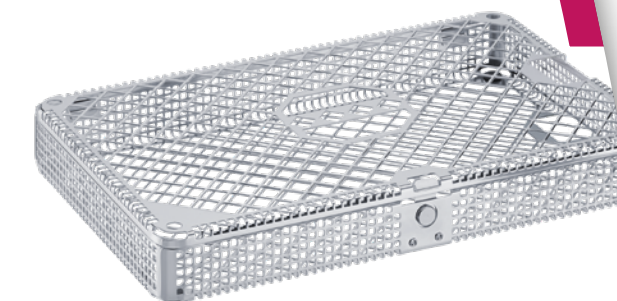
Washbasket for the ZEPF CMF[®] SYSTEM

Following the Zepf-Care Series, the modularly composable components for the ZEPF CMF[®] SYSTEM were developed, offering a washbasket with appropriate combination options.

The actual tools can be organized depending on the desired diameter.

This guarantees an RKI compliant reprocessing of the CMF[®] SYSTEM.

Accessories for the Washbasket



85.195.00

Washbasket 1/1 as rack for the remaining components

Boxes

Dimensions 85 x 75 x 22 mm (L x W x H)

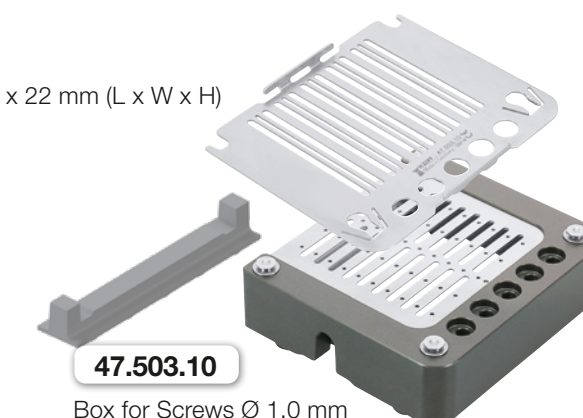


47.503.53

Screw and Pin Box for 2 x 5 screws Ø 1.2, 1 x 5 screws Ø 1.5, 10 membrane pins and a small storage space for instruments, membranes, bone plates etc.

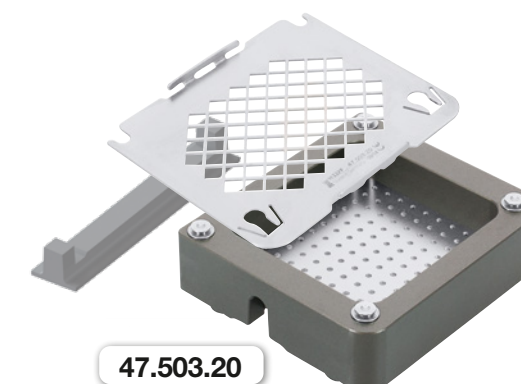
47.503.50

Screw and Pin Box for 3 x 5 screws Ø 1.0, 10 membrane pins and a small storage space for instruments, membranes, bone plates etc.



47.503.10

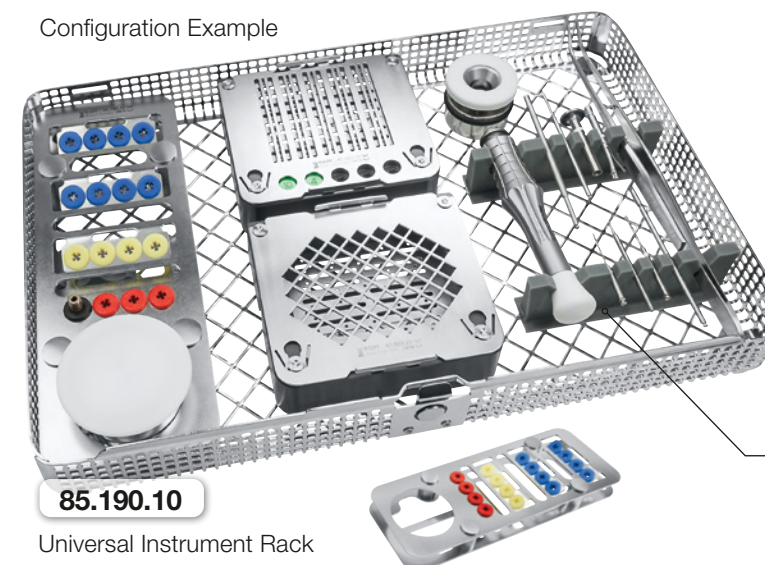
Box for Screws Ø 1.0 mm



47.503.20

Box for receiving e.g. titanium plates

Configuration Example



85.190.10

Universal Instrument Rack



85.251.04

Mixing Cup with plastic lid, stainless steel, Ø 4 cm

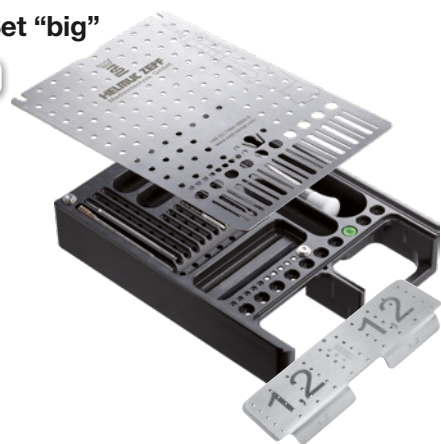
Profile for instruments with individual water jet cutting

ZEPF CMF[®] SYSTEM
 CRANIO MAXILLOFACIAL FRACTURE SYSTEM

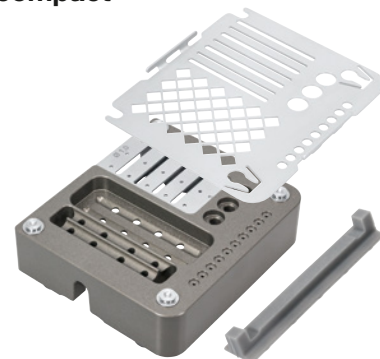
1.0 mm Steel Screws

 1.0 CMF[®] Set "big"

47.504.10*


 1.0 CMF[®] Set "compact"

47.505.10*



CMF[®] Set "big" or CMF[®] Set "compact": Please remember to indicate the desired length of the screws and pins.
 One pack of screws and pins are already included in the special set price!

1.0 mm Steel Screws / PU 5 pieces	Please tick as appropriate	Titanium Pins / PU 5 pieces	Please tick as appropriate
<div> <div>47.573.04S*</div> <div>Ø 1.0 x 4 mm</div> <div><input type="checkbox"/></div> </div>		<div> <div>47.560.03*</div> <div>3 mm</div> <div><input type="checkbox"/></div> </div>	
<div> <div>47.573.06S*</div> <div>Ø 1.0 x 6 mm</div> <div><input type="checkbox"/></div> </div>		<div> <div>47.560.05*</div> <div>5 mm</div> <div><input type="checkbox"/></div> </div>	
<div> <div>47.573.08S*</div> <div>Ø 1.0 x 8 mm</div> <div><input type="checkbox"/></div> </div>			
<div> <div>47.573.10S*</div> <div>Ø 1.0 x 10 mm</div> <div><input type="checkbox"/></div> </div>			

Color pins to mark the lot are included in each packing unit of screws.

1.0 mm = "green"

The basic configuration of the selected box includes the following instruments:



47.524.12*

Blade , Ø 1.0 mm,
60 mm, color coding □

47.502.02

ZEPF Screwdriver Handle



08.523.08*

Core Hole Drill, Ø 0.8 mm,
drilling depth 7 mm

47.950.02*

Pin Applicator 60 mm

Ordering Service:

Customer No.

Company/Practice

Phone/Fax

Street, house number

E-Mail

All prices mentioned are a non-binding
 sales recommendation plus VAT.
 Errors and price corrections reserved.

Postal Code / City

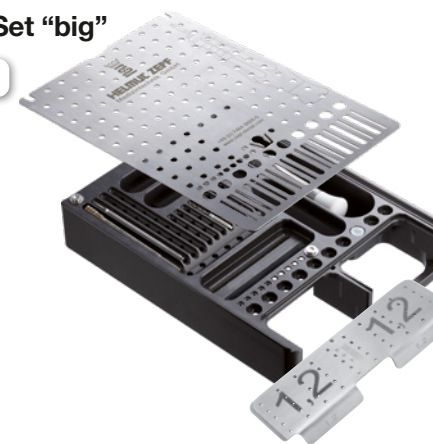
Date / Signature, Company or Practice Stamp

ZEPF CMF[®] SYSTEM
 CRANIO MAXILLOFACIAL FRACTURE SYSTEM

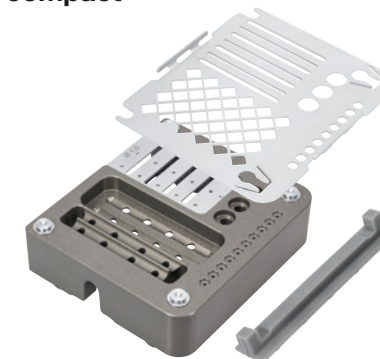
1.2 mm Titanium Screws

 1.2 CMF[®] Set "big"

47.504.12*


 1.2 CMF[®] Set "compact"

47.505.12*



CMF[®] Set "big" or CMF[®] Set "compact": Please remember to indicate the desired length of the screws and pins.
 One pack of screws and pins are already included in the special set price!

1.2 mm Titanium Screws / PU 5 pieces	Please tick as appropriate	Titanium Pins / PU 5 pieces	Please tick as appropriate
<div> <div>47.574.04*</div> <div>Ø 1.2 x 4 mm</div> <div><input type="checkbox"/></div> </div>		<div> <div>47.560.03*</div> <div>3 mm</div> <div><input type="checkbox"/></div> </div>	
<div> <div>47.574.06*</div> <div>Ø 1.2 x 6 mm</div> <div><input type="checkbox"/></div> </div>		<div> <div>47.560.05*</div> <div>5 mm</div> <div><input type="checkbox"/></div> </div>	
<div> <div>47.574.08*</div> <div>Ø 1.2 x 8 mm</div> <div><input type="checkbox"/></div> </div>			
<div> <div>47.574.10*</div> <div>Ø 1.2 x 10 mm</div> <div><input type="checkbox"/></div> </div>			
<div> <div>47.574.12*</div> <div>Ø 1.2 x 12 mm</div> <div><input type="checkbox"/></div> </div>			

Color pins to mark the lot are included in each packing unit of screws.

1.2 mm = "silver"

The basic configuration of the selected box includes the following instruments:



47.524.12*

Blade , Ø 1.2 mm,
60 mm, color coding □

47.502.02

ZEPF Screwdriver Handle



08.523.09*

Core Hole Drill, Ø 0.9 mm,
drilling depth 9 mm

47.950.02*

Pin Applicator, 60 mm

Ordering Service:

Customer No.

Company/Practice

Phone/Fax

Street, house number

E-Mail

All prices mentioned are a non-binding
 sales recommendation plus VAT.
 Errors and price corrections reserved.

Postal Code / City

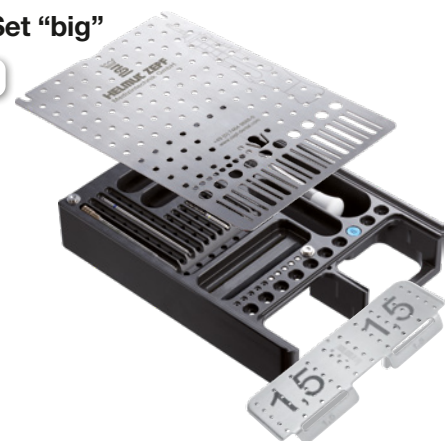
Date / Signature, Company or Practice Stamp

ZEPF CMF SYSTEM
 CRANIO MAXILLOFACIAL FRACTURE SYSTEM

1.5 mm Titanium Screws

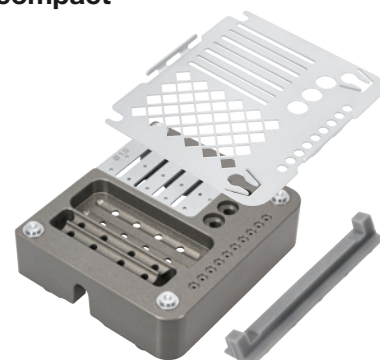
1.5 CMF Set "big"

47.504.15*



1.5 CMF Set "compact"

47.505.15*



CMF Set "big" or CMF Set "compact": Please remember to indicate the desired length of the screws and pins. One pack of screws and pins are already included in the special set price!

1.5 mm Titanium Screws / PU 5 pieces

Please tick as appropriate



Color pins to mark the lot are included in each packing unit of screws.



1.5 mm = "blue"

47.575.04*

Ø 1.5 x 4 mm



47.575.06*

Ø 1.5 x 6 mm



47.575.08*

Ø 1,5 x 8 mm



47.575.10*

Ø 1.5 x 10 mm



Titanium Pins / PU 5 pieces

Please tick as appropriate



47.560.03*

3 mm



47.560.05*

5 mm



The basic configuration of the selected box includes the following instruments:



47.524.15*

Blade , Ø 1.5 mm,
60 mm, color coding



47.502.02

ZEPF Screwdriver Handle



08.523.13*

Core Hole Drill, Ø 1.3 mm,
drilling depth 12 mm, color coding



47.950.02*

Pin Applicator, 60 mm

Ordering Service:

Customer No.

Company/Practice

Phone/Fax

Street, house number

E-Mail

Postal Code / City

Date / Signature, Company or Practice Stamp

All prices mentioned are a non-binding
sales recommendation plus VAT.
Errors and price corrections reserved.

Alphabetical Index

A spiration Tube, serrated	10	L indo-Levien Xtool	7	Surgical Aspiration Tube	10
B enex Extraction	6	M edicine Cup	21	Syfrig Benex Extraction System	6
Benex SinusLift Elevator	8	Micro Needle Holder	12	Syfrig Benex SinusLift Elevator	8
		Mixing Cup	21	Syringe	11
C acaci/Syfrig SinusLift	9			T itanium Pin CMF System	18
CMF System	16-24	N eedle Holder	12	Tunneling Instrument Combination	20
D epth Gauge	8	P in Applicator	18	U MBRELLA Steel Screws	16
Driver Guide Benex	6	Plugger/Spoon Kirsch	8	Universal Handle > Prosthetic Kit	12
		Probe, acc. to Kahn	13		
E levator Lindo-Levien	7			W ashbasket CMF System	29
Extraction System Benex	6	R aspatory/Tunneling Combination	13	Washbasket, pre-assembled	14-15
H andle Z-Shape	4-5	S crew CMF System	19	X tool Elevator Lindo-Levien	7
Hildebrand Elevator Lindo-Levien	11	SinusLift Elevator	8		
		SinusLift Instrument Set	9	Z EPF-Care System	14-15
K ahn Probe	13	SpinLock Needle Holder	12	Z-Shape Handle	4-5
Kirsch Plugger / Spoon	8	Spoon/Plugger Kirsch	8		



Numerical Index

Medical devices are marked with CE in the numerical index.

For all medical devices with the * mark behind the article number, the Notified Body is indicated on the label.

08.523.08	18	CE	26.010.11OX	5	CE	47.523.12	18	CE	47.574.08*	23	CE
08.523.08	22	CE	26.010.21OX	5	CE	47.523.15	18	CE	47.574.10*	19	CE
08.523.09	18	CE	26.030.02	4	CE	47.524.12	18	CE	47.574.10*	23	CE
08.523.09	23	CE	26.030.03	4	CE	47.524.12	22	CE	47.574.12*	19	CE
08.523.11	18	CE	26.030.04	4	CE	47.524.12	23	CE	47.574.12*	23	CE
08.523.13	18	CE	26.030.06	4	CE	47.524.15	18	CE	47.574.11*	19	CE
08.523.13	24	CE	26.030.07	4	CE	47.524.15	24	CE	47.574.33*	19	CE
08.524.16	18	CE	26.030.08	4	CE	47.525.12	18	CE	47.574.35*	19	CE
08.524.16	18	CE	26.030.09	4	CE	47.525.15	18	CE	47.574.37*	19	CE
08.524.19	18	CE	26.030.01	4	CE	47.525.51	6	CE	47.574.40*	19	CE
08.902.031HF	18	CE	26.030.10	4	CE	47.560.03*	18	CE	47.575.03*	19	CE
08.906.029C	18	CE	26.182.38	13	CE	47.560.03*	22	CE	47.575.04*	19	CE
12.300.08	6	CE	26.182.39	13	CE	47.560.03*	23	CE	47.575.04*	24	CE
12.300.15	6	CE	26.182.40	13	CE	47.560.03*	24	CE	47.575.05*	19	CE
12.300.16	6	CE	31.691.00	8	CE	47.560.05*	18	CE	47.575.06*	19	CE
12.300.17	6	CE	41.200.15TC	12	CE	47.560.05*	22	CE	47.575.06*	24	CE
12.300.20	6	CE	41.200.17TC	12	CE	47.560.05*	23	CE	47.575.07*	19	CE
12.300.30	6	CE	41.201.15TC	12	CE	47.560.05*	24	CE	47.575.08*	19	CE
12.300.35	6	CE	41.201.17TC	12	CE	47.572.50	16	CE	47.575.08*	24	CE
12.300.45	6	CE	41.848.40	9	CE	47.572.50	19	CE	47.575.10*	19	CE
12.300.47	6	CE	41.848.41	8	CE	47.572.51	16	CE	47.575.10*	24	CE
12.300.48	6	CE	41.848.41	9	CE	47.572.51	19	CE	47.575.12*	19	CE
12.300.60	6	CE	41.848.42	8	CE	47.572.52	16	CE	47.575.34*	19	CE
12.300.65	6	CE	41.848.42	9	CE	47.572.52	19	CE	47.575.36*	19	CE
12.300.70	6	CE	41.848.43	9	CE	47.572.53	16	CE	47.575.39*	19	CE
12.300.75	6	CE	41.868.07	8	CE	47.572.53	19	CE	47.575.43*	19	CE
12.300.80	6	CE	46.035.30	12	CE	47.572.54	16	CE	47.950.02	18	CE
12.302.00	6	CE	47.501.03	17	CE	47.572.54	19	CE	47.950.02	22	CE
12.303.00	6	CE	47.502.01	18	CE	47.572.55	16	CE	47.950.02	23	CE
17.007.06LL	7	CE	47.502.02	18	CE	47.572.55	19	CE	47.950.02	24	CE
17.007.07LL	7	CE	47.502.02	22	CE	47.573.04S*	19	CE	85.190.10	21	CE
17.008.01LL	7	CE	47.502.02	23	CE	47.573.04S*	22	CE	85.195.00	21	CE
17.008.02LL	7	CE	47.502.02	24	CE	47.573.06S*	19	CE	85.195.03	15	CE
19.649.40	10	CE	47.503.10	21	CE	47.573.06S*	22	CE	85.195.20	15	CE
19.700.01	11	CE	47.503.20	21	CE	47.573.08S*	19	CE	85.195.60	15	CE
19.700.01US	11	CE	47.503.50	21	CE	47.573.08S*	22	CE	85.251.04	21	CE
19.700.02	11	CE	47.503.53	21	CE	47.573.10S*	19	CE	85.540.51	18	CE
19.700.02US	11	CE	47.504.10	16	CE	47.573.10S*	22	CE	85.540.52	18	CE
19.700.03	11	CE	47.504.10	22	CE	47.574.03*	19	CE	85.540.54	18	CE
19.700.03US	11	CE	47.504.12	23	CE	47.574.04*	19	CE	85.540.55	18	CE
19.700.04	11	CE	47.504.15	24	CE	47.574.04*	23	CE	85.540.60	18	CE
19.700.04US	11	CE	47.505.10	22	CE	47.574.06*	19	CE	85.995.00	15	CE
24.454.00	13	CE	47.505.12	23	CE	47.574.06*	23	CE	85.995.01	15	CE
24.455.00	13	CE	47.505.15	24	CE	47.574.07*	19	CE	85.995.20	14	CE
26.010.05	4	CE	47.523.12	18	CE	47.574.08*	19	CE	85.995.25	14	CE

ZEPF Online Dental Catalog



sustainable | up-to-date | complete | contemporary | mobile | practical

This year, we are doing without the printed version of our dental catalog. In this way, we protect our environment, and you can access our extensive dental program anytime and anywhere.

Simply scan this QR code with your smartphone, or visit our media library at www.zepf-dental.com.





HELMUT ZEPF
MEDIZINTECHNIK GMBH



ZEPP Online Catalog



sustainable | up-to-date | complete | contemporary | mobile | practical

This year, we are doing without the printed version of our dental catalog.
In this way, we protect our environment, and you can access our extensive dental program anytime and anywhere.
Simply scan this QR code with your smartphone, or visit our media library at www.zepf-dental.com!

ZEPP | dental
essentials

AESTHETIC IS THE RESULT

Manufacturer since **1921**

zepf-dental.com

MADE  IN GERMANY