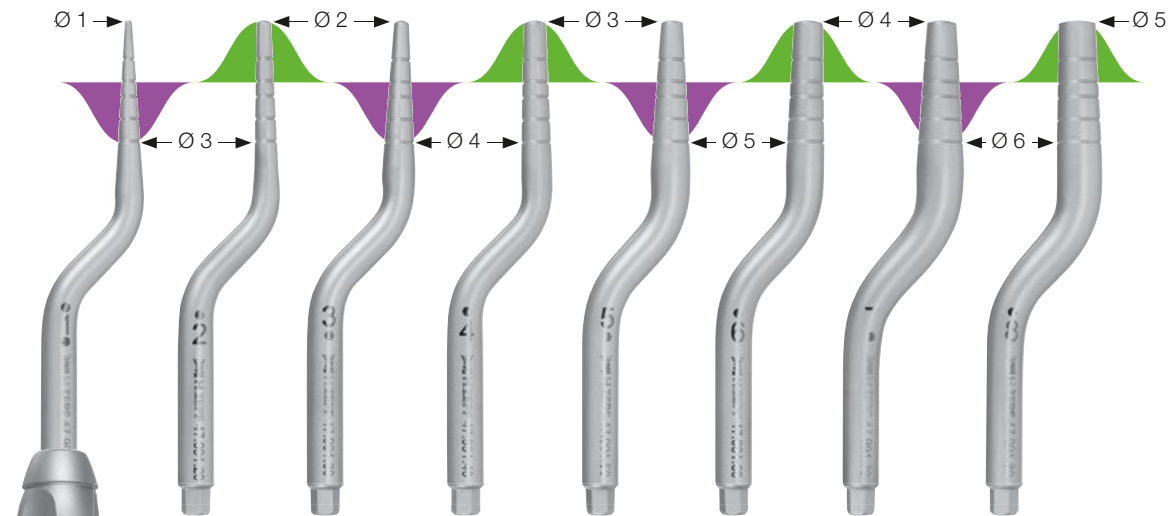


# VGO OST-Sets – V<sub>ariable</sub> G<sub>eometry</sub> O<sub>steotomes</sub>

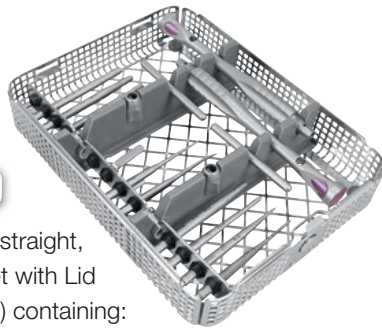
acc. to Pavel Krastev DDS, PATENTED, with two ergonomic Z-Shape handles



**VGO** OST-Sets  
PATENTED



**Z-SHAPE**  
DBGM



**47.990.00**

VGO Ost-Set – straight,  
in a Washbasket with Lid  
(REF 85.194.22) containing:

## ANTERIOR **VGO** OST-Set

with 7 straight screw osteotome inserts, numbered from 0-6

- Tips have first 8 mm threaded
- Produce micro cuts in bone
- Increased bleeding and better angiogenesis
- No malleting needed
- Tip-0 is unique in straight kit (Ø 1 – Ø 2 mm)
- Tip-0 to accommodate thin anterior ridges
- Provides precision marking tips for immediate placement

### Included in both sets:



**17.710.00**

Z-Shape Universal handle & instrument holder for inserts with  
HEX-adapter, AF4, sandblasted, 2 pieces included in the set



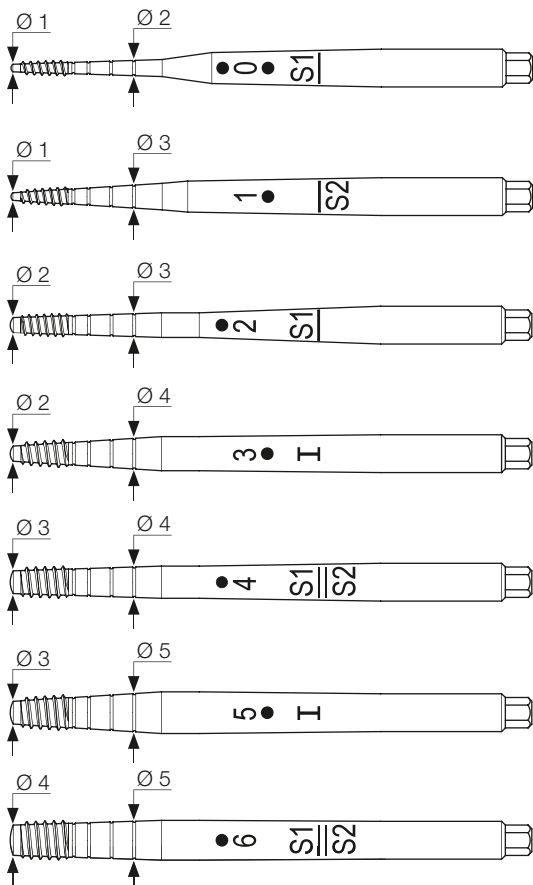
**47.990.06**

Precision Marking Tip, bent,  
scale 8/10/13/16 mm



**47.990.08**

Precision Marking Tip, straight,  
scale 8/10/13/16 mm



## Straight Screw Osteotomes in the **VGO** OST-Set

Exchangeable with Hex Connection for Z-Shape Universal handle

**47.990.10**

Screw Osteotome Insert straight, size 0,  
tapered Ø 1 - 2 mm, convex shank Ø 2 mm,  
scale 8/10/13/16 mm

**47.990.20**

Screw Osteotome Insert straight, size 1,  
tapered Ø 1 - 3 mm, convex shank Ø 3 mm,  
scale 8/10/13/16 mm

**47.990.30**

Screw Osteotome Insert straight, size 2,  
tapered Ø 2 - 3 mm, convex shank Ø 3 mm,  
scale 8/10/13/16 mm

**47.990.40**

Screw Osteotome Insert straight, size 3,  
tapered Ø 2 - 4 mm, convex shank Ø 4 mm,  
scale 8/10/13/16 mm

**47.990.50**

Screw Osteotome Insert straight, size 4,  
tapered Ø 3 - 4 mm, convex shank Ø 4 mm,  
scale 8/10/13/16 mm

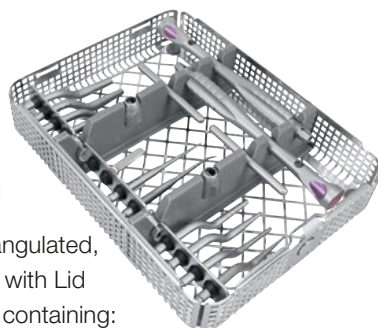
**47.990.60**

Screw Osteotome Insert straight, size 5,  
tapered Ø 3 - 5 mm, convex shank Ø 5 mm,  
scale 8/10/13/16 mm

**47.990.70**

Screw Osteotome Insert straight, size 6,  
tapered Ø 4 - 5 mm, convex shank Ø 5 mm,  
scale 8/10/13/16 mm

**VGO**  
PATENTED



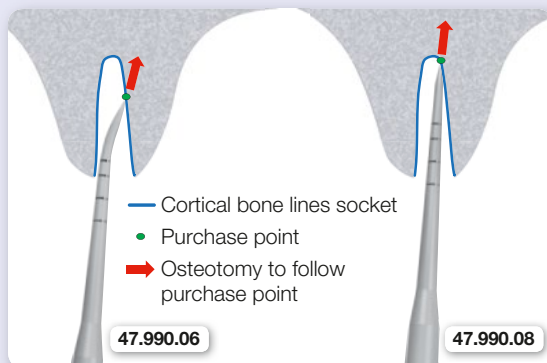
47.991.00

VGO Ost-Set – angulated,  
in a Washbasket with Lid  
(REF 85.194.22) containing:

## POSTERIOR **VGO** OST-Set

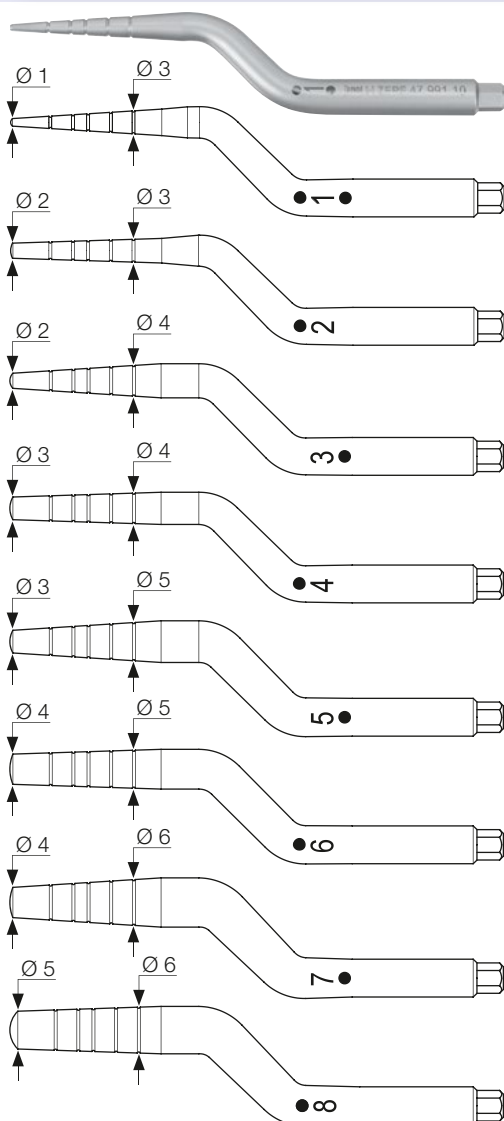
with 8 angulated osteotome inserts, numbered from 1-8

- No threads since turning motion limited
- 5 mm mark placed on all tips to mark threshold for crestal lift
- 5 mm is minimum available bone recommended for crestal lift
- Tips have same taper as tips 1-6 for straight kit
- Two additional tips (7 and 8) to accommodate wider ridges typically found in posterior area
- Provides precision marking tips for immediate placement



### Application of the Precision Marking Tips

To be used during immediate placement surgery to initiate osteotomy offset towards palatal. Rotary drills usually slide down bone due to angle at which the osteotomy is initiated.



### Angulated Osteotomes in the **VGO** OST-Set

Exchangeable with Hex Connection for Z-Shape Universal handle

47.991.10

Osteotome Insert angulated, size 1,  
tapered Ø 1 - 3 mm, convex shank Ø 3 mm,  
scale 5/8/10/13/16 mm

47.991.20

Osteotome Insert angulated, size 2,  
tapered Ø 2 - 3 mm, convex shank Ø 3 mm,  
scale 5/8/10/13/16 mm

47.991.30

Osteotome Insert angulated, size 3,  
tapered Ø 2 - 4 mm, convex shank Ø 4 mm,  
scale 5/8/10/13/16 mm

47.991.40

Osteotome Insert angulated, size 4,  
tapered Ø 3 - 4 mm, convex shank Ø 4 mm,  
scale 5/8/10/13/16 mm

47.991.50

Osteotome Insert angulated, size 5,  
tapered Ø 3 - 5 mm, convex shank Ø 5 mm,  
scale 5/8/10/13/16 mm

47.991.60

Osteotome Insert angulated, size 6,  
tapered Ø 4 - 5 mm, convex shank Ø 5 mm,  
scale 5/8/10/13/16 mm

47.991.70

Osteotome Insert angulated, size 7,  
tapered Ø 4 - 6 mm, convex shank Ø 6 mm,  
scale 5/8/10/13/16 mm

47.991.80

Osteotome Insert angulated, size 8,  
tapered Ø 5 - 6 mm, convex shank Ø 6 mm,  
scale 5/8/10/13/16 mm



## VGO OST-Sets – AESTHETIC IS THE RESULT

### Advantages of the VGO Osteotomes

- ZERO HEAT PRODUCED!
- ALWAYS PASSIVE ENTRANCE!
- DECREASED CRESTAL STRESS!
- FULL CONTROL OF RATE OF DILATION!  
since hand-piece is not used at constant speed

### ■ REVOLUTIONARY FLEXIBILITY OF USE

All Osteotomes on the market may look alike, but they are **not**!

We offer a unique stepped formula for tip escalation and a revolutionary flexibility of use like no other system on the market.

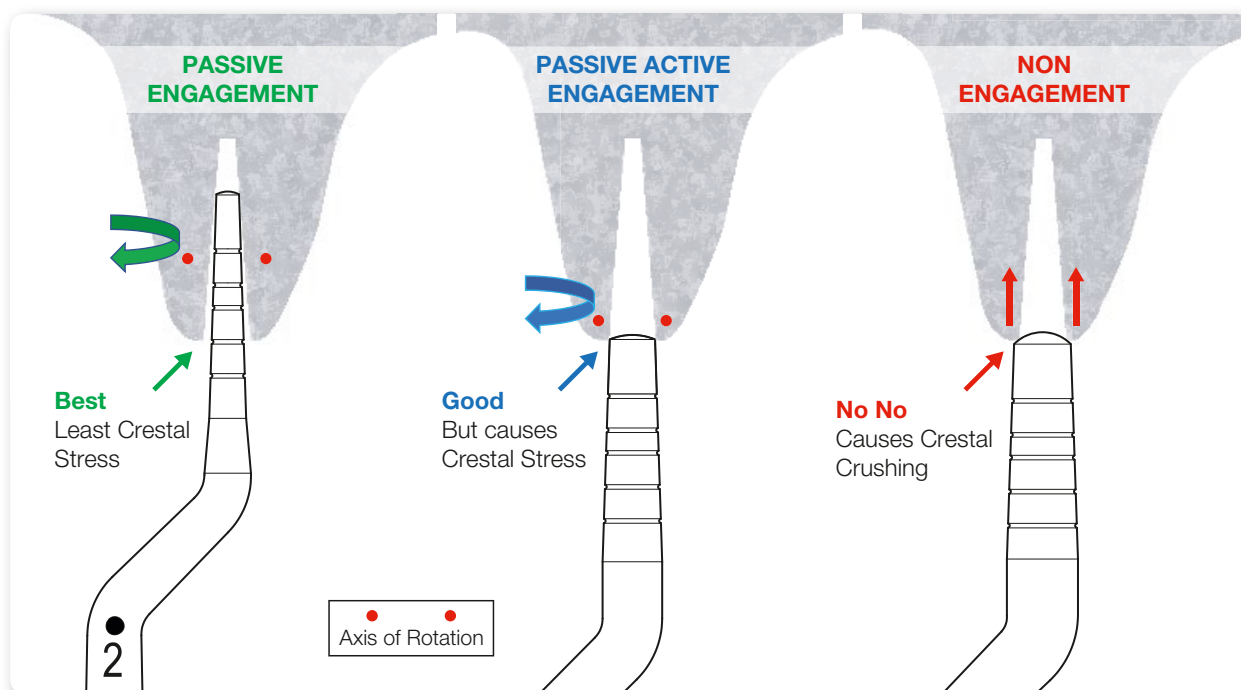
### 3 MAIN MODES OF USE!

**ZEPF VGO MODE: PASSIVE ENGAGEMENT** (Stepped Escalation)

**ZEPF HYBRID MODE: PASSIVE ENGAGEMENT** (Linear Escalation)

**ZEPF STANDARD MODE: PASSIVE ACTIVE ENGAGEMENT / NON ENGAGEMENT**  
not recommended

**VGO**  
PATENTED



## Bone is Gold: PASSIVE WAVE DILATION SYSTEM

acc. to Pavel Krastev DDS

How do we manage the osteotomy ATRAUMATICALLY?  
How do we manage the osteotomy for greater implant success? Bone is Gold, so how do we hurt the bone less? How do we mallet less, as to make procedure less unpleasant for our patients?

Let us control the bone as opposed to having the bone control us.

**Because of the overlapping diameters of the VGO Osteotomes, you are able to passively engage the previously made intrabony cavity, even when You didn't use the full length of the tip.**

**PASSIVE ENGAGEMENT** – successive osteotome fits freely into the previous intrabony cavity and becomes active at a point deeper than crestal bone, as is currently done by the new **ZEPF VGO** Way.

**PASSIVE ACTIVE ENGAGEMENT** – when a traditional Summers Osteotome is used to full working depth of tool, the next Tip will engage previously made intrabony cavity passively and will start being active immediately as it progresses further into cavity.

**NON ENGAGEMENT** – when next osteotome is used, it simply does NOT fit the intrabony cavity created by previous osteotome. This is what occurs when traditional summers osteotomes are used to partial depth of tip.

AESTHETIC IS THE RESULT