

SRC Kit for Subperiosteal Recession Coverage

acc. to Dr. Zeltner, with SRC Instruments in **Z-SHAPE** Handle with **ZEPF nanopal**® coating



SRC

Z-SHAPE *DBGM*
RELAX

Application: SRC Instruments for Subperiosteal Recession Coverage

acc. to Dr. Zeltner



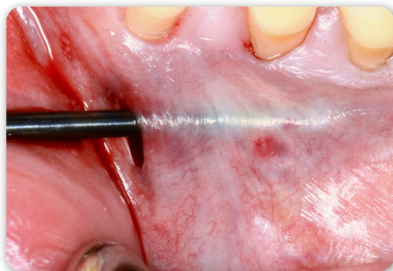
Figure 1: Initial clinical situation with generalized recessions in the mandible on the left.



Step 1: Incision in the canine region 3 to 4 mm below the mucogingival border.



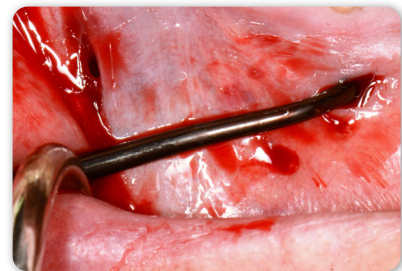
Step 2: Horizontal subperiosteal preparation of the whole quadrant with instrument #1. Caution: The mental nerve must be spared!



Step 2: Caution: The mental nerve must be spared!



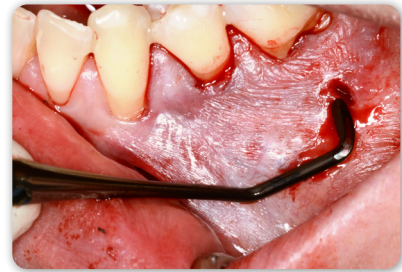
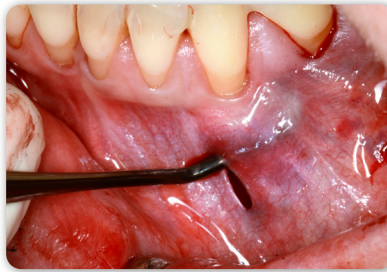
Step 3: Additional incision in the first molar region 3 to 4 mm below the mucogingival margin.



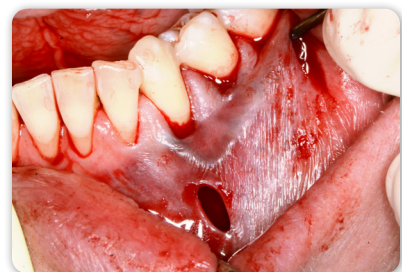
Step 4: Vertical subperiosteal preparation from mesial to distal to the gingival margin with the straight working part of the angled instrument #4.



Step 5: Elevation of the papillae from mesial to distal with the curved end of the instrument #4.



Step 6: Repeat steps 4 and 5 from distal to mesial with counter-rotating instrument #3.

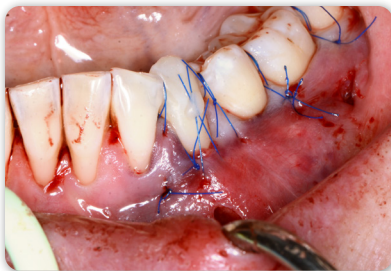


Step 6: Repeat steps 4 and 5 from distal to mesial with counter-rotating instrument #3.

Step 7: Insertion of autologous connective tissue or soft tissue substitutes.

Application: SRC Instruments

acc. to Dr. Zeltner



Step 8: Fixation of the flap in coronal position with vertical loop sutures.

Marco Zeltner

Dr med. dent. (federally certified) Specialist Dentist for Reconstructive Dental Medicine SSO [Swiss Dental Association]

2006: State examination at the University of Zurich

2006: Dentist at Grimm Dentists

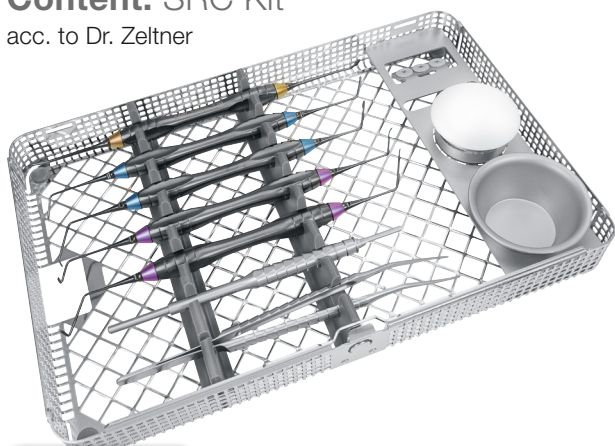
2012 - 2015: Specialisation in reconstructive dental medicine at the Clinic for Dental Crown and Bridge Prosthetics, Partial Prosthetics and Dental Material Science of the University of Zurich

2017: Partner at the Grimm Dentists



Content: SRC Kit

acc. to Dr. Zeltner



46.045.000X

SRC Kit in 1/1 washbasket contains the following instruments:

SRC Instruments #1 to #5, Drop-Control Blade Holder, Cooley Micro Forceps, Medicine Cup with plastic lid and Medicine Cup



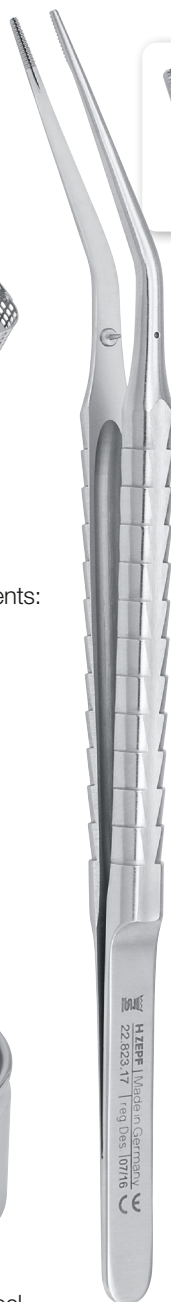
85.252.25

Medicine Cup, stainless steel, Ø 60 mm x 27 mm high, 25 ccm



85.251.04

Medicine Cup, stainless steel, with plastic lid, Ø 40 mm x 30 mm high, usable on both sides



Micro Forceps

22.823.17

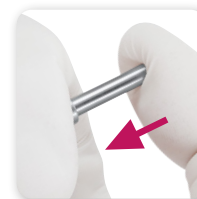
Cooley
25° curved



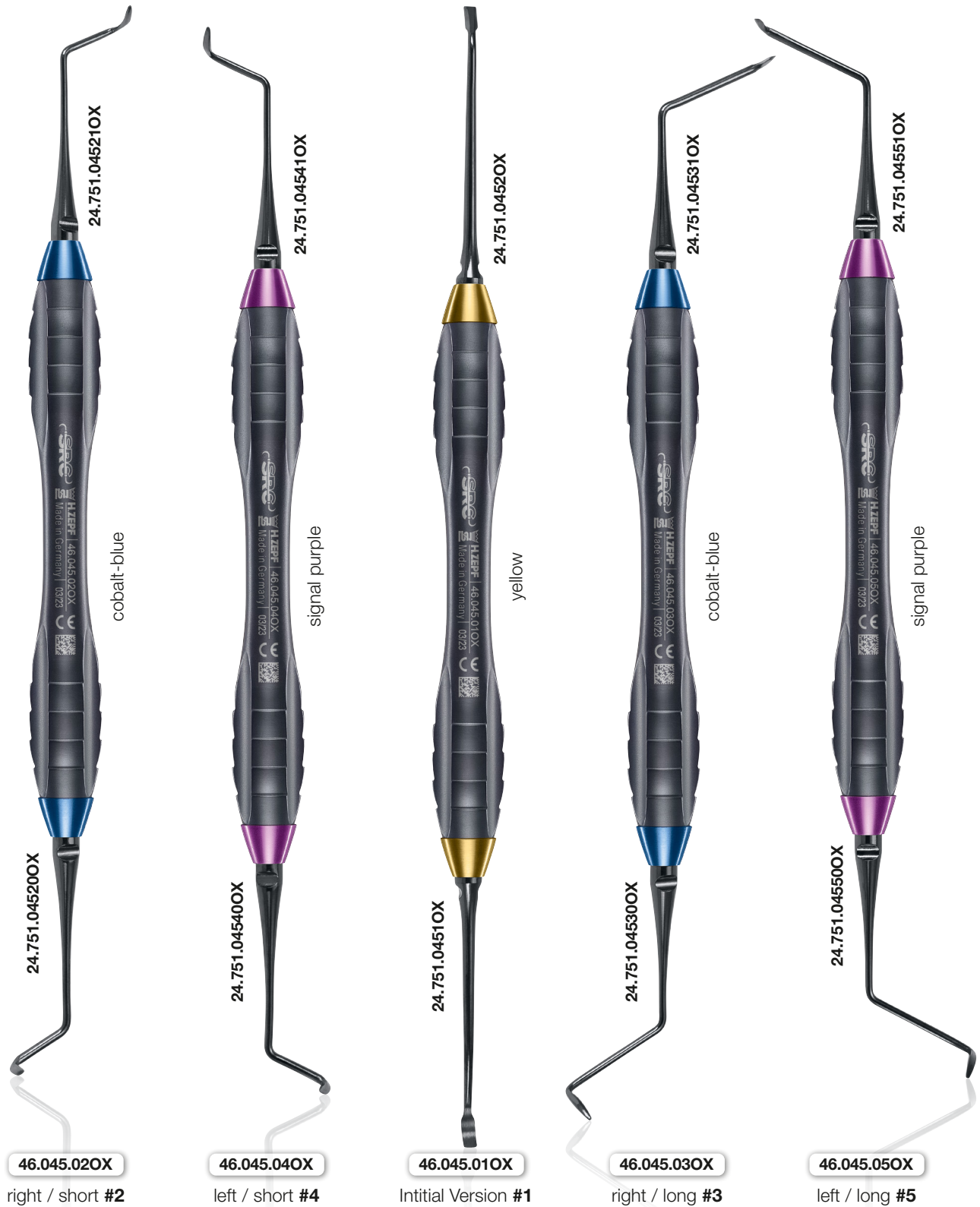
Scalpel Blade Holder

46.007.18

Drop-Control®
Ø 9.5 mm



Content: SRC Kit for Subperiosteal Recession Coverage
acc. to Dr. Zeltner



► SRC Instruments in Z-SHAPE Handle with ZEPF nanopal® coating ◀

AESTHETIC IS THE RESULT