

## WEN Tension Release Comb

acc. to Dr. Wen, DBGM



## WEN Tension Release Comb

acc. to Dr. Wen, DBGM

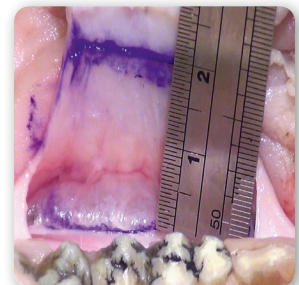
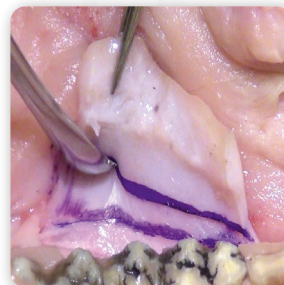
Periodontal interventions for recession coverage are made to cover the root surface as complete as possible. If a soft tissue flap shall be translocated coronally, the WEN Tension Release Comb can be used to extend the split flap by combing, to easily achieve a complete coverage. Depending on the condition of the soft tissue, flap extensions of 15 to 20 mm will be possible.



**41.865.01**

WEN Tension Release Comb  
acc. to Dr. Wen, DBGM,  
width of working tips 5 and 8 mm

### Application



AESTHETIC IS THE RESULT