

## SinusLift Instrument Set

acc. to Dr. med., med. dent. Benno Syfrig and Dr. med. dent. Claudio Cacaci



## Benex® SinusLift Elevators

acc. to Dr. med., med. dent. Benno Syfrig



41.848.41 Benex® SinusLift Elevator, # 1, ZEPF-Line with graduation

41.848.42 Benex® SinusLift Elevator, # 2, ZEPF-Line with graduation

For internal sinus lift with osteotome technique (Summers technique), generally a height of at least 6 mm of remaining bone is required. If this height is lower, a sinus floor elevation by lateral window approach is recommended (external sinus lift).

In co-operation with the company **HELMUT ZEPF** Medizintechnik, Dr. med., med. dent. Benno Syfrig (CH) has developed an instrumentation allowing an easy, safe and practical elevation of the Schneider membrane through the implant tunnel to any height, independent of the offer of vertical bone.

The intervention is extremely gentle to the tissue. The buccal maxillary sinus wall and eventual sinus bone septums remain intact. This is to guarantee a good ossification of the augmentation material and an accelerated osseointegration of the implant.

## Benex® SinusLift Application

acc. to Dr. med., med. dent. Benno Syfrig



1

1. The implant tunnel is prepared with the drill up to the maxillary sinus cortical bone and afterwards the sinus cortical bone is thinned out using a round diamond bur.



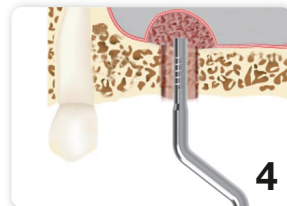
2

2. After thinning out, the sinus cortical bone is cautiously pressed in with the blunt osteotome (light blows from a mallet).



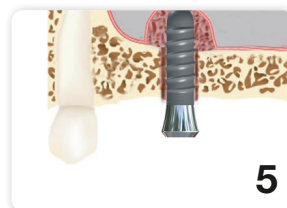
3

3. Now the Schneider membrane is lifted with the sinus elevator: The instrument is carefully pushed in circular direction around the borehole between the cortical bone and the sinus mucosa. The mucosa is released from the base with the working tip of the elevator and pressed upwards with the spherical curve of the working tip.



4

4. The mucosa is lined underneath through the borehole with bone substitute material.

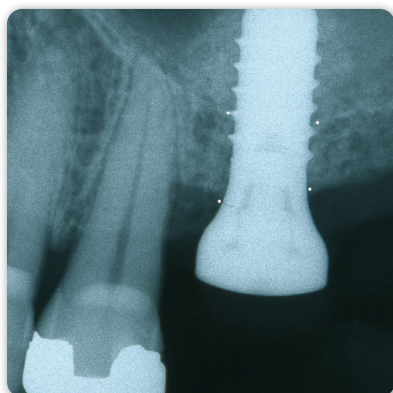


5

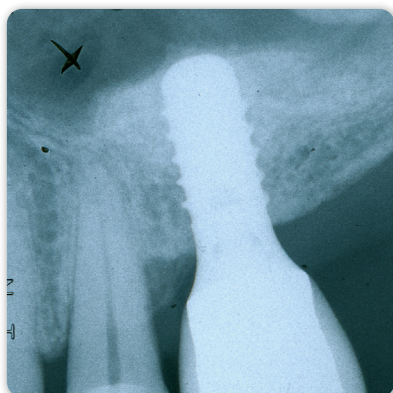
5. The implant is inserted. A minimal primary stability will be sufficient for an osseointegration without any problem.



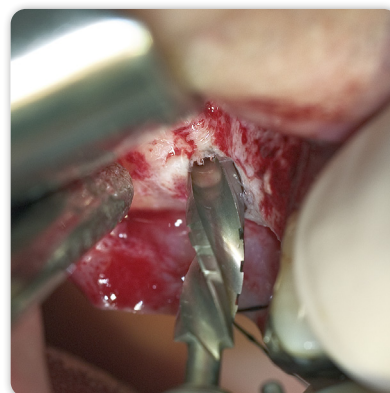
### Benex® SinusLift: Case studies of the minimally invasive Sinusfloor augmentation acc. to Dr. med., med. dent. Benno Syfrig



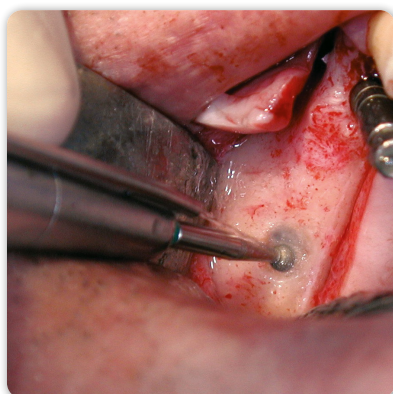
**CASE 1**  
Remaining bone height 3-4 mm;  
X-ray treatment immediately post-operative: Straumann implant (Wideneck, 10 mm) in BioOss augmentation material



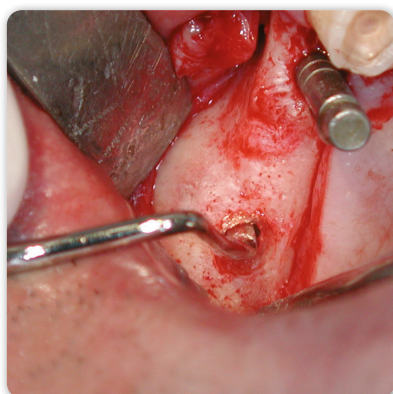
**X-ray treatment:**  
4 years after sinus lift:  
Ossified augmentation material,  
neoplasm of sinus cortical bone



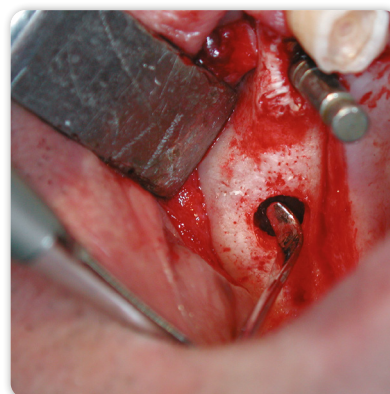
**Intra-operative:**  
Preparation of the implant tunnel with the drill up to the sinus cortical bone



**CASE 2**  
Remaining bone height less than 3 mm;  
access to the sinus with diamond bur without implant bur.



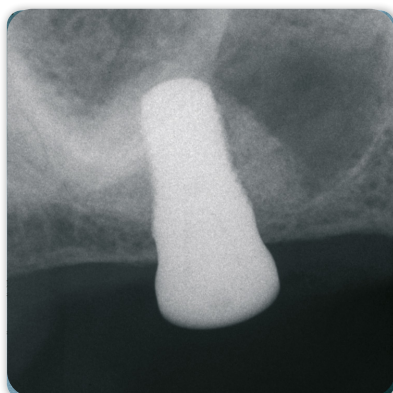
**Intra-operative:**  
Release and elevation of the Schneider membrane with the sinus elevator no. 1



**Intra-operative:**  
Release and elevation of the Schneider membrane with the sinus elevator no. 2



**Transmucous implant healing**

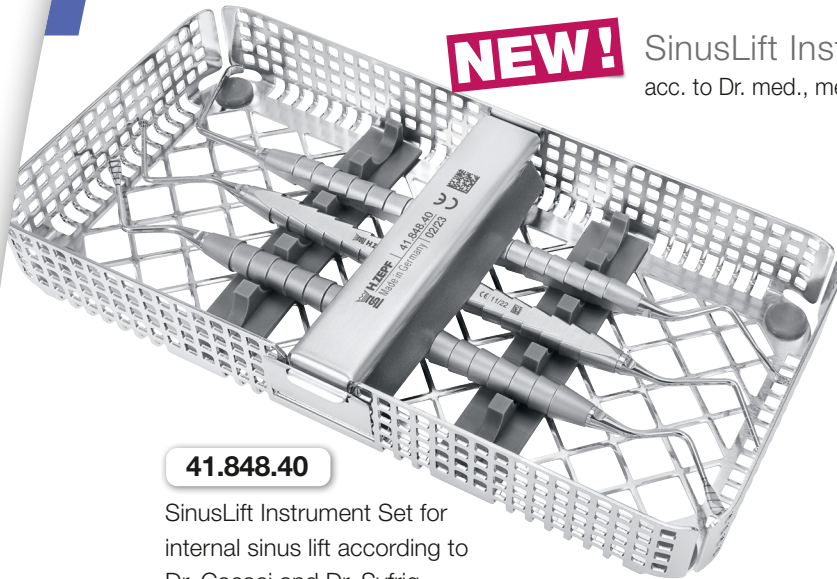


**X-ray treatment immediately post-operative:**  
Straumann implant (TE 4.8 mm / 10 mm) in BioOss augmentation material



**X-ray treatment 2 years after sinus lift:**  
Ossified augmentation material,  
neoplasm of sinus cortical bone





**NEW!**

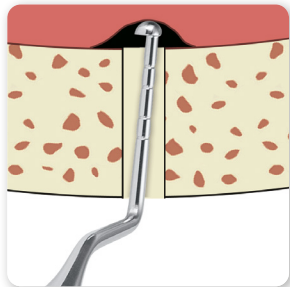
## SinusLift Instrument Set

acc. to Dr. med., med. dent. Benno Syfrig and Dr. med. dent. Claudio Cacaci

This set combines the important instruments for an atraumatic sinus lift. It consists of the two **Benex**® SinusLift elevators (REF 41.848.41/.42) and the newly developed sinus elevator according to Dr. Cacaci (REF 41.848.43). With this elevator, the sinus floor mucosa is stretched, with rotating and pushing movements, and thus lifted from the sinus floor bone and to ensure that the membrane has been detached.

**41.848.40**

SinusLift Instrument Set for internal sinus lift according to Dr. Cacaci and Dr. Syfrig



### Advantages at a glance:

- atraumatic
- no infection risk in comparison to a open OP
- no wound care or healing interruption
- extremely shortened treatment period
- high success rate. Secure in use
- shortened osseointegration



**NEW!**



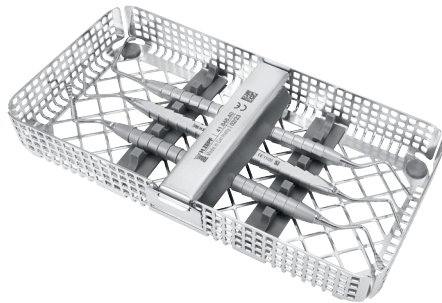
**41.848.43**

**Cacaci SinusLift Elevator, ZEPF-Line handle, with graduation**

### Illustration

### Article Description

### Order Quantity



**41.848.40**

1 set

SinusLift Instrument Set for internal sinus lift according to Dr. Cacaci and Dr. Syfrig in a washtray  
REF 85.182.00. All instruments are double-ended with interchangeable inserts and **ZEPF-Line** handle, with graduation, M4x0.5



**41.848.41**

1 piece

**Benex**® SinusLift Elevator, # 1



**41.848.42**

1 piece

**Benex**® SinusLift Elevator, # 2



**41.848.43**

1 piece

SinusLift Elevator acc. to Dr. Cacaci

AESTHETIC IS THE RESULT